

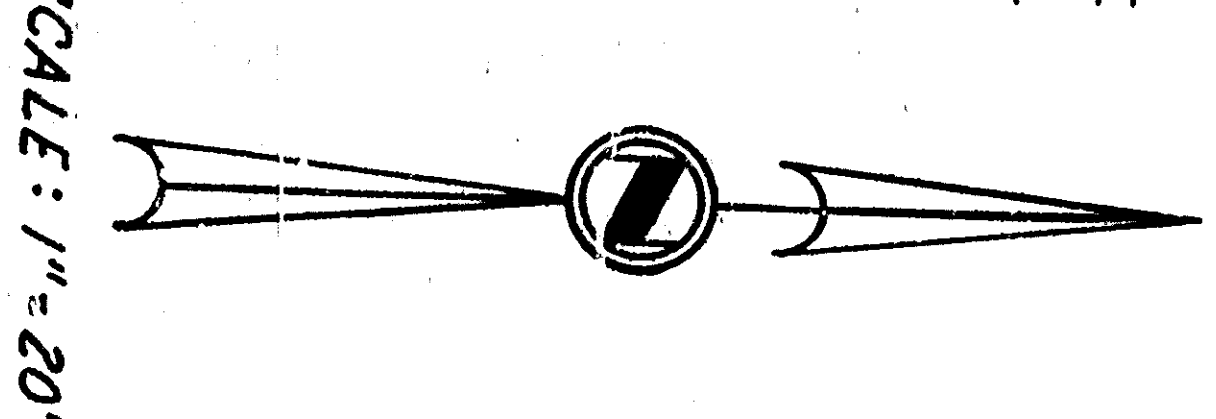
CONSTRUCTION NOTES

- 1. CONST. R.C.C. CURB & GUTTER, TYPE "G" PER STD. 2321-A.
- 2. CONST. STD. CONC. DRIVEWAY, PER STD. 2321-A.
- 3. CONST. 4" R.C.C. SIDEWALK.
- 4. CONST. 3" A.C. OVER 6" A.B. PER TYPICAL SECTION HEREON AND AS REQUIRED BY SOIL TESTS.

GENERAL NOTES

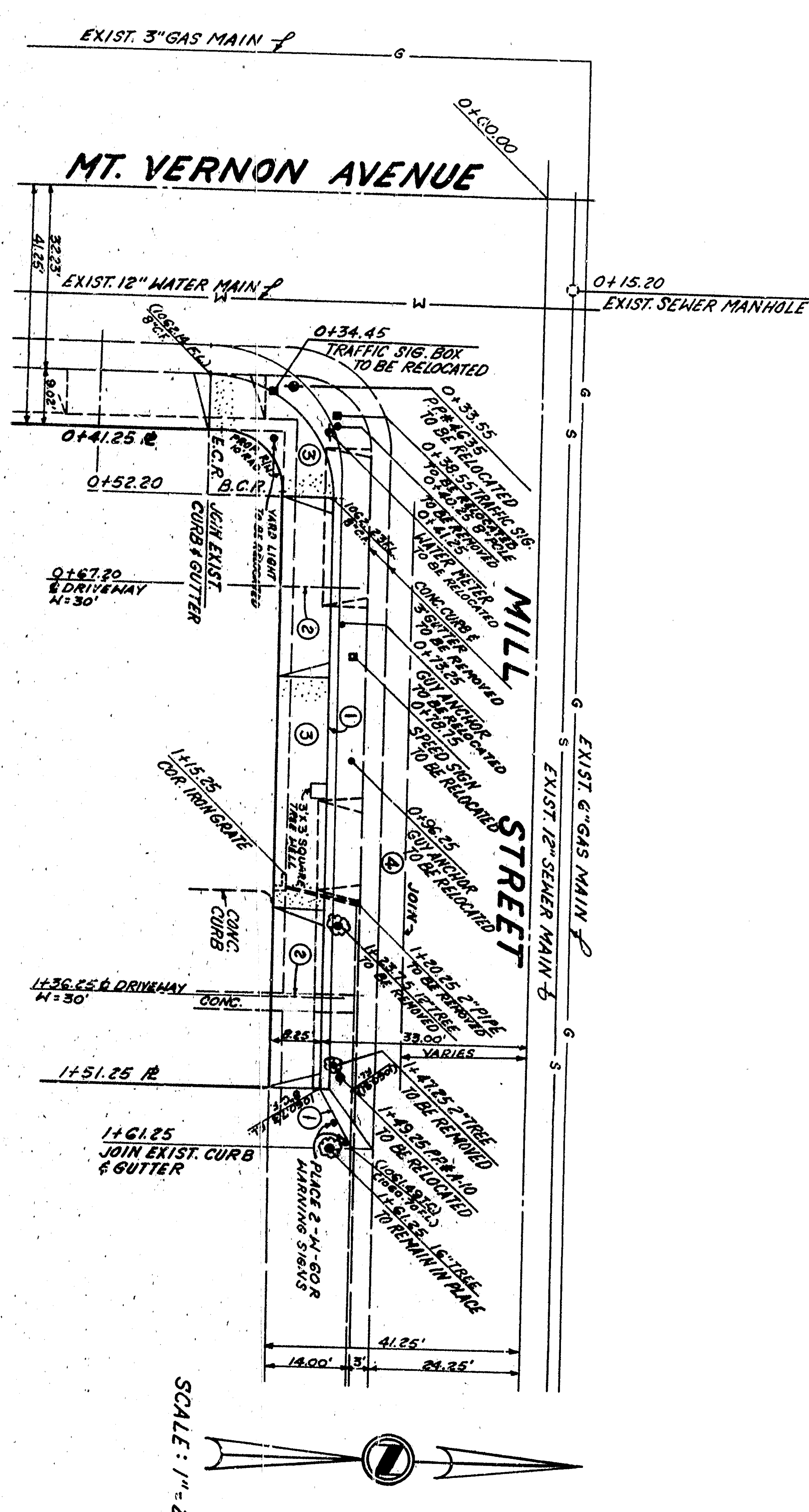
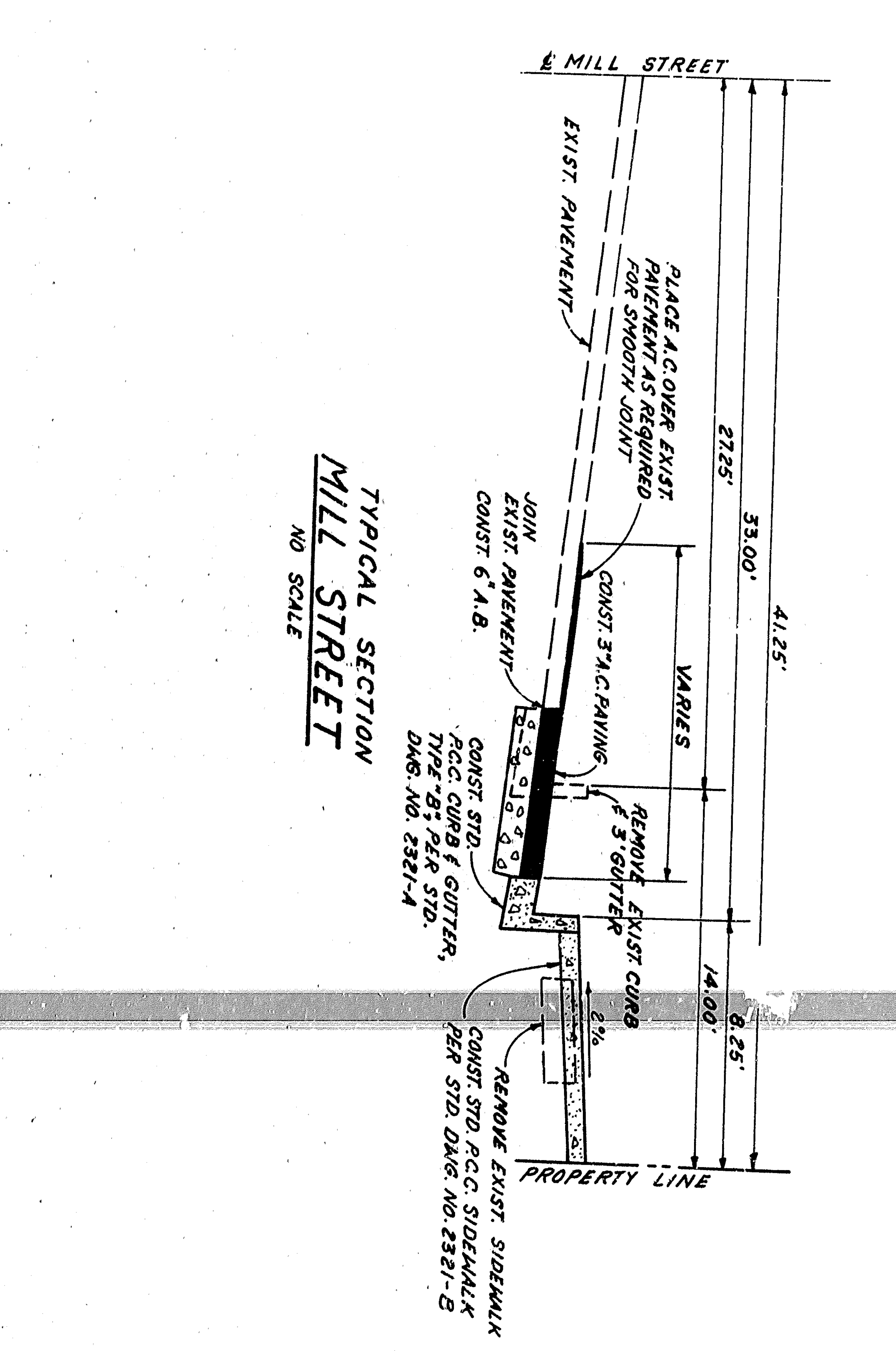
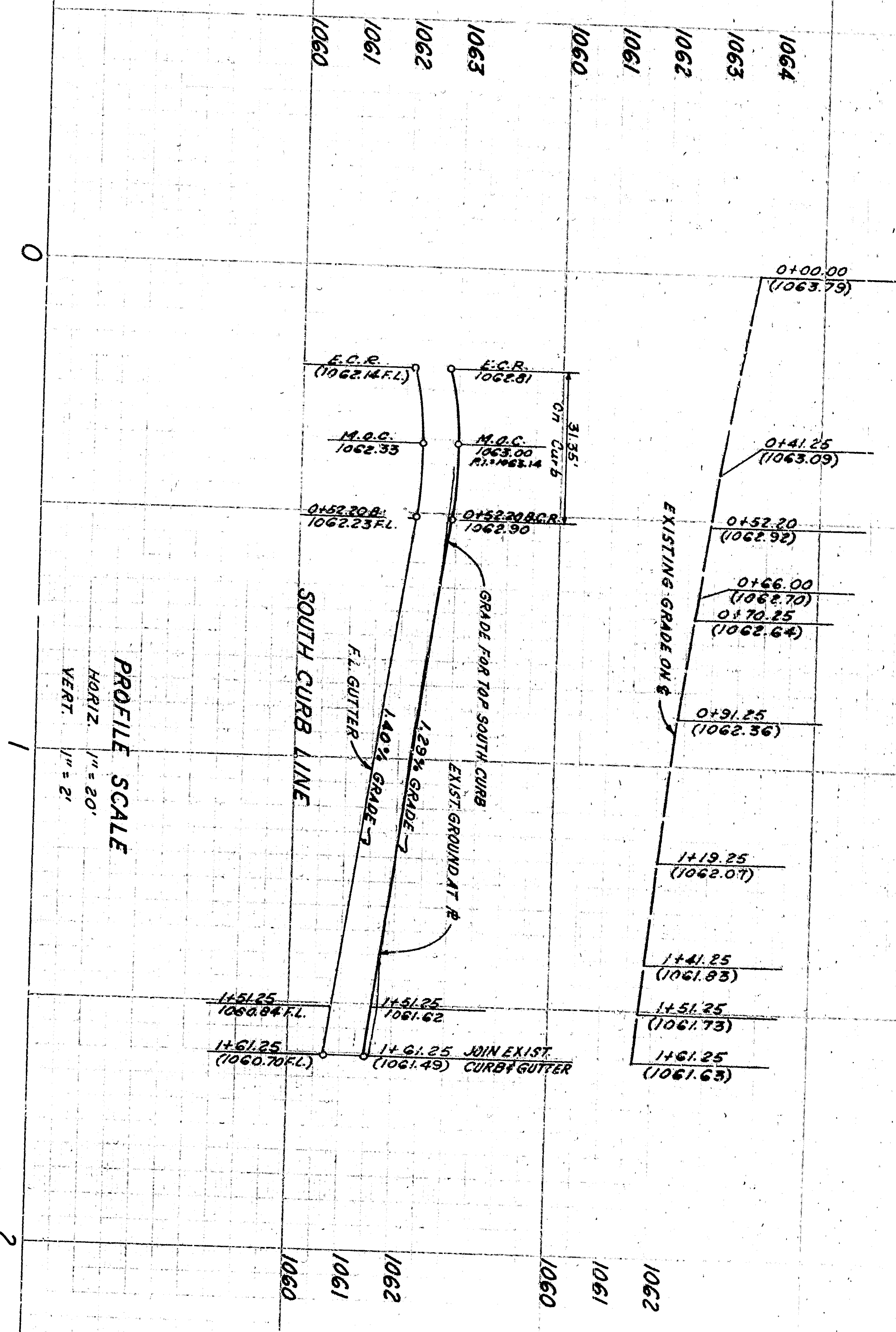
- 1. ALL WORK EMPLOYED ON THESE PLANS SHALL BE DONE IN ACCORDANCE WITH APPLICABLE PROVISIONS OF STANDARD SPECIFICATIONS AND STANDARD DRAWINGS IN 2321 ON FILE IN THE OFFICE OF THE CITY ENGINEER.
- 2. BENCH MARK: N.E. CURB RADIOS MT. VERNON & MILL (SIGNAL), ELEV. 1062.99.
- 3. THE UTILITY COMPANIES SHALL BE NOTIFIED 30 DAYS BEFORE ANY CONSTRUCTION.
- 4. NO SURFACE WATER SHALL BE DRAINAGE ACROSS CITY PARKWAY.
- 5. ALL CATCH BASINS AND UNDERDRAIN DRAINS SHALL BE SHOWN ON FINAL CONST. PLANS WHICH WILL NOT BE PREPARED UNTIL STREET PLANS ARE APPROVED.

CURB DATA
 1" 85' 48.00"
 1" 20.00"
 1" 31.35"
 1" 13.53"



PLANS PREPARED IN THE OFFICE OF:
TRI-STATE ENGINEERING CO.
 615 SOUTH RAYMOND AVENUE
 ALBERTA, CAN./BRNVA
 PHONE 714-871-3510
 DATE 2-14-67
 R. L. RAYMOND, R.C.E. 12567

DEPARTMENT OF ENGINEERING	
CITY OF SAN BERNARDINO	
STREET IMPROVEMENT PLAN AND PROFILE OF	
MILL STREET	
FROM MT. VERNON AVENUE TO 61' 25" EAST OF	
MT. VERNON AVENUE.	
SUBMITTED BY	291-2722-ENG-02
APPROVED	18-46
DRAWN BY	R. L.
CHECKED BY	R. L.
REGISTERED CIVIL ENGINEER NO. 12567	
REFERENCE	DRAWING NO.
	5 3 3 1
	SHEET /
	OF 1 SHEETS



CONSTRUCTION NOTES

1. CONST. CONC. CURB & GUTTER, TYPE "G" PER STD. 2321-A.
2. CONST. STD. CONC. DRIVEWAY, PER STD. 2321-A.
3. CONST. 4"-THICK SIDEWALK.
4. CONST. 3" A.C. OVER 6" A.B. PER TYPICAL SECTION HEREON AND AS REQUIRED BY SOIL TESTS.

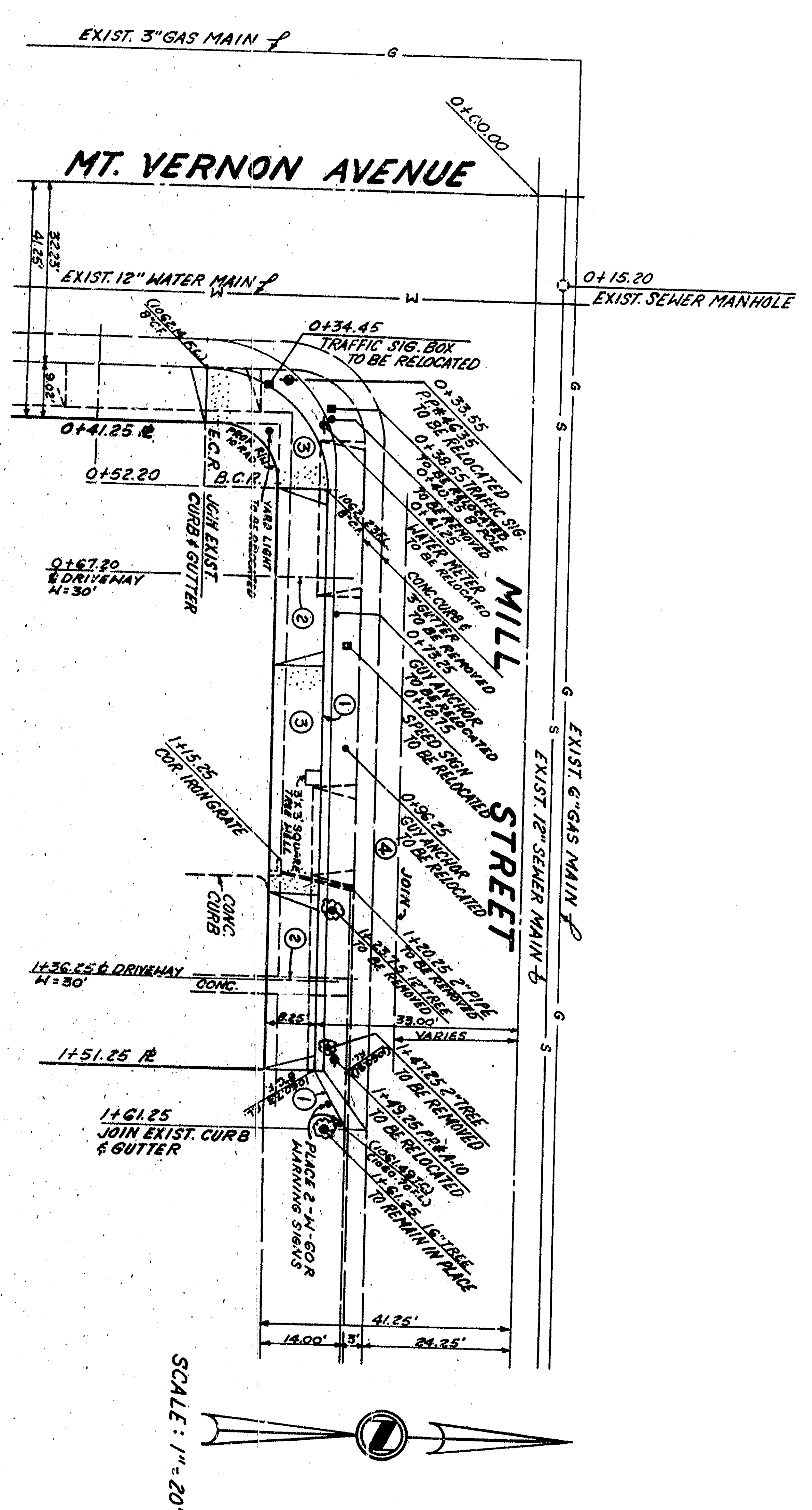
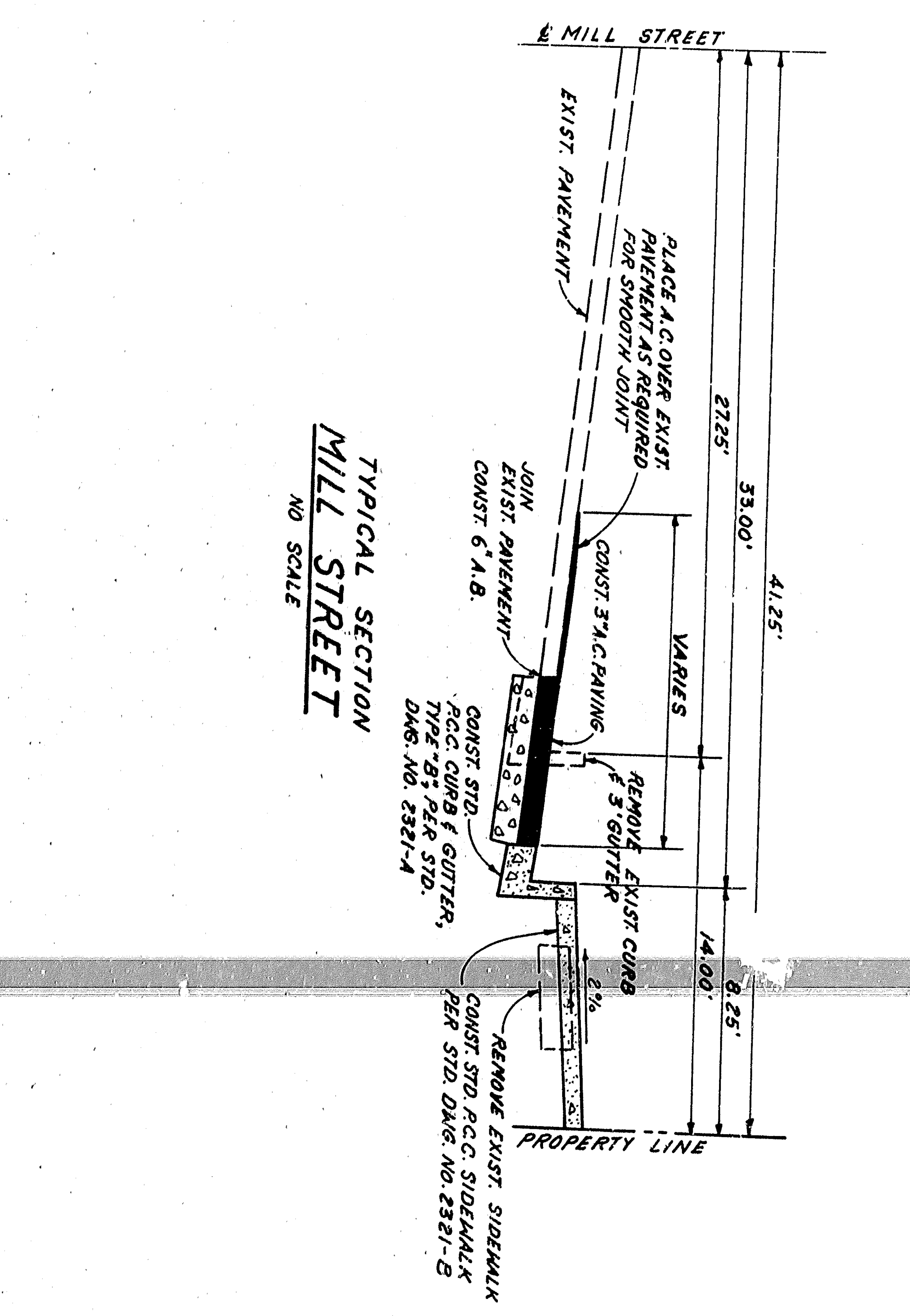
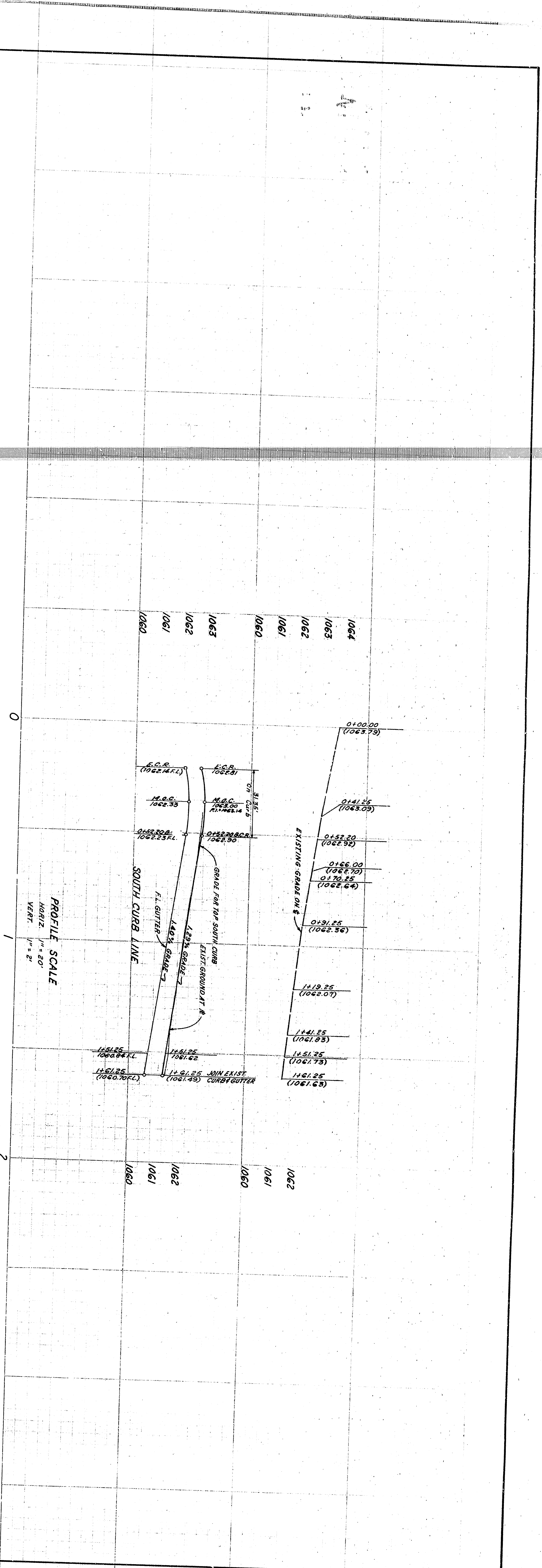
GENERAL NOTES

1. ALL WORK EMPLOYED ON THESE PLANS SHALL BE DONE IN ACCORDANCE WITH APPLICABLE PROVISIONS OF STANDARD SPECIFICATIONS AND STANDARD DRAWINGS IN 2321 ON FILE IN THE OFFICE OF THE CITY ENGINEER.
2. BENCH MARK: N.E. CURB RADUS MT. VERNON & MILL (SIGNAL), ELEV. 1062.99.
3. THE UTILITY COMPANIES SHALL BE NOTIFIED 30 DAYS BEFORE ANY CONSTRUCTION.
4. NO SURFACE WATER SHALL BE DRAINAGE ACROSS CITY PARKWAY.
5. ALL CATCH BASINS AND UNDERDRAIN DRAINS SHALL BE SHOWN ON FINAL CONST. PLANS WHICH WILL NOT BE PREPARED UNTIL STREET PLANS ARE APPROVED.

CURB DATA
 1. 85'-48.00"
 2. 20.00"
 3. 31.35"
 4. 1.3539"

PLANS PREPARED IN THE OFFICE OF:
TRI-STATE ENGINEERING CO.
 615 SOUTH RAYMOND AVENUE
 ALBERTA, CALIFORNIA
 PHONE 714-871-3510

DEPARTMENT OF ENGINEERING CITY OF SAN BERNARDINO	
STREET IMPROVEMENT PLAN AND PROFILE OF MILL STREET	
FROM MT. VERNON AVENUE TO 61.25' EAST OF MT. VERNON AVENUE.	
SUBMITTED BY: ZHU, ZHANG, ENG. CO.	REFERENCE: DRAWING NO. 5331
APPROVED: [Signature]	CHECKED BY: R.L. OF SHEETS
REGISTERED CIVIL ENGINEER NO. 12553	



CONSTRUCTION NOTES

1. CONST. R.C.C. CURB & GUTTER, TYPE "G" PER STD. 2321-A.
2. CONST. STD. CONC. DRIVEWAY, PER STD. 2321-A.
3. CONST. 4"-R.C.C. SIDEWALK.
4. CONST. 3" A.C. OVER 6" A.B. PER TYPICAL SECTION HEREON AND AS REQUIRED BY SOIL TESTS.

GENERAL NOTES

1. ALL WORK EMPLOYED ON THESE PLANS SHALL BE DONE IN ACCORDANCE WITH APPLICABLE PROVISIONS OF STANDARD SPECIFICATIONS AND STANDARD DRAWINGS IN 2321 ON FILE IN THE OFFICE OF THE CITY ENGINEER.
2. BENCH MARK: N.E. CURB RADIOS MT. VERNON & MILL (SIGNAL), ELEV. 1062.99.
3. THE UTILITY COMPANIES SHALL BE NOTIFIED 30 DAYS PRIOR TO THE COMMENCEMENT OF CONSTRUCTION.
4. NO SURFACE WATER SHALL BE DRAINED ACROSS CITY PARKWAY.
5. ALL CATCH BASINS AND UNDERDRAIN DRAINS SHALL BE SHOWN ON FINAL CONST. PLANS WHICH WILL NOT BE PREPARED UNTIL STREET PLANS ARE APPROVED.

CURB DATA
 1'-05" 48'-00"
 1'-20'-00"
 1'-31'-35"
 1'-13'-39"

PLANS PREPARED IN THE OFFICE OF:
TRI-STATE ENGINEERING CO.
 615 SOUTH RAYMOND AVENUE
 ALBERTA, CALIFORNIA
 PHONE 714-871-3510

DATE: 2-14-67
 R.L. 12507

DEPARTMENT OF ENGINEERING CITY OF SAN BERNARDINO	
STREET IMPROVEMENT PLAN AND PROFILE OF MILL STREET	
FROM MT. VERNON AVENUE TO 61' 25" EAST OF MT. VERNON AVENUE.	
SUBMITTED BY: ZHU, ZHANG, ENG. CO.	REFERENCE: DRAWING NO. 5331
APPROVED: R.L. 12507	CHECKED BY: R.L. 12507
REGISTERED CIVIL ENGINEER NO. 12507	SHEET 1 OF 1 SHEETS